



ANNUAL REPORT

Jan-Dec, 2025

Impact Foundation Bangladesh (IFB)



Cosmopolitan Centre (3rd Floor), 22/2 Babor road, Block-B, Mohammadpur, Dhaka-1207



<https://www.impactfoundationbd.org/>



impact@dhaka.net

INTRODUCTION

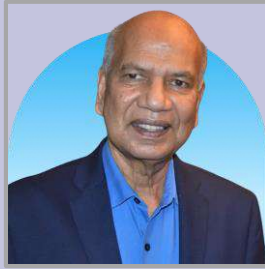
IMPACT Foundation Bangladesh (IFB), a non-government organization started its journey in 1993 with inspiration and support from the Late Sir John Wilson, CBE, DCL, the architect of the Global IMPACT Movement against avoidable disabilities. IFB is registered as a local Charitable Trust and is also a member of the International Federation of IMPACT Organizations (IFIO), which brought several Asian, African, and European countries under a common umbrella to uphold the interests of persons with disabilities in alleviating their sufferings by medical and surgical interventions. IFB is governed by a 6-member Board of Trustees. The Foundation's programs are implemented and managed on a day-to-day basis by a team of 234 staff and many volunteers, headed by the Chief Executive Officer.

IFB is actively engaged in the prevention and cure of avoidable disabilities in rural Bangladesh. This is directly linked to the 2030 Agenda for Sustainable Development Goals (SDGs). According to the World Health Organization (WHO) estimates, approximately 15% of the total population has a disability of one kind or another in Bangladesh. Disability on this scale represents not only a major health problem but also a prime cause of poverty and underdevelopment. The vision of IMPACT Foundation Bangladesh is a society, free from disability and poverty, where people can fully realize their human potential. IFB has concentrated its

efforts in the southwest region and riverine rural areas of the country.

The riverine populations are served by a 3-deck boat hospital named Impact '*Jibon Tari*' Floating Hospital. Different other projects are implemented in Chuadanga and Meherpur by the Impact Hospital and Diagnostic Centre, Impact Masudul Haque Memorial Community Health Centre (IMCHC), IMPACT '*Jibon Mela*' Health Center, and Sir Jon Wilson Assistive Device Centre. IFB established IMPACT Nursing Institute, offering a 3-year Diploma degree in Nursing and Midwifery for girls from poor socio-economic backgrounds in 2014. Through the hospitals and health centers, IFB offers a wide range of healthcare, educational, and training services aimed at the prevention and cure of avoidable disabilities. These services include but are not limited to primary health care through out-patients clinics and satellite clinics, surgery (cataract, clubfoot, ENT, cleft lip/palate) for the cure of disability, supply of assistive devices to restore mobility, immunization for women and children, awareness raising on health, nutrition, and sanitation, antenatal and postnatal check-up, training for Traditional Birth Attendants(TBA), training on early detection of disability for the school teachers, home gardens development at household level for nutrition supplementation and income generation, safe drinking water and arsenic mitigation programs and training sessions on Menstrual Hygiene Management (MHM).

Board of Trustees



Rezaul Haque, PhD
Chairman and
Founder Trustee



**Mr. Monsur Ahmed
Chowdhury**
Founder Trustee



**Mr. Md. Mahbub
Alam**
Trustee



**Mr. Mohammed Bin
Quasem**
Trustee

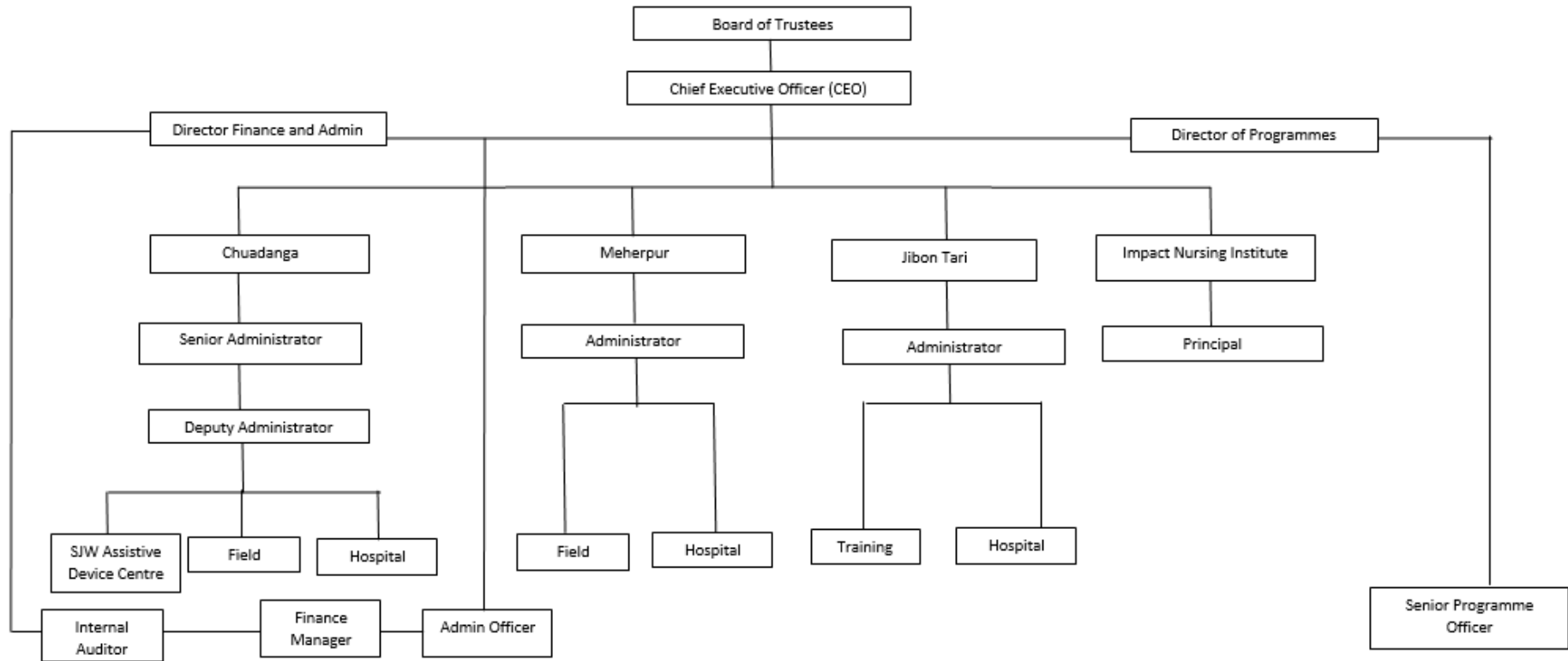


Dr. S.M. Akbar
Trustee



**Ms. Aasha Mehreen
Amin**
Trustee

**Impact Foundation Bangladesh
ORGANOGRAM**



PROJECTS OF IMPACT FOUNDATION BANGLADESH

IMPACT *JIBON TARI* FLOATING HOSPITAL - Since April 1999

The first-ever floating hospital in Bangladesh and also the south-east Asia, the ‘Jibon Tari’

Floating Hospital was launched on 10 April, 1999 on the bank of river Padma at Mawa ghat to provide medical and surgical treatment on board for the prevention



and cure of avoidable disabilities among the people living in the rural, flood-prone, riverine areas of Bangladesh. Translated to mean “the boat of life”, the three-decked ‘Jibon Tari’ hospital has been providing essential healthcare services to people for over two decades now. The unique floating hospital has gained trust and popularity among the less fortunate people living in the riverside areas of Bangladesh.

Impact Hospital and Diagnostic Centre, the new premise of Impact Masudul Haque Memorial Community Health Centre, Chuadanga - Since April, 2002

As an extension of the Impact Masudul Haque Memorial Community Health Centre (IMCHC), the eight-story, 50-bedded Impact Hospital and Diagnostic Centre was inaugurated in 2022 to serve a greater number of patients, particularly women and children under one umbrella. The hospital is transforming healthcare access to quality of care for countless lives in southwest Bangladesh. The hospital services include a 24-hour emergency and general care, specialist consultations, dedicated operation theatres for eye, gynecological, orthopedic, cleft lip/palate, ENT and other surgeries, separate inpatient wards and cabins for men, women, and children, well-equipped pathology and diagnostic services, with infrastructural provisions for installation of CT scan, MRI, and mammography facilities in the future.



The expansion of hospital services marks a significant milestone that brings specialized medical care and services closer to underserved rural populations and strengthens community engagement through compassionate care to meet an increased demand from the community.

The Impact Hospital and Diagnostic Centre is synonymous with accessible and specialized healthcare that uplifts life and fosters lasting wellbeing.

Sir John Wilson Assistive Device and Physiotherapy Centre, Chuadanga - Since April 2004

Named in honor of the late Sir John Wilson, CBE, DCL, the Sir John Wilson Assistive Device Centre (SJWADC) was established in 2004 in Chuadanga district to serve people with specialized rehabilitation needs, including orthopedic and prosthetic devices, as well as physiotherapy by trained professionals.



As the sole production facility for prosthetic devices in south-west Bangladesh, the SJWADC has earned the trust and appreciation of people from both Chuadanga and nearby districts

for its quality of care and life-changing services. In its early years, the centre was small, and as the demand increased with time, IFB allocated a large part of the original hospital building exclusively for SJWADC services.



Over the years, the Centre has helped countless individuals with physical disability to restore mobility, independence, and dignity.

Impact 'Jibon Mela' Health Centre, Meherpur- Since October 2007

A replication of the Chuadanga programme, Impact Meherpur programme started as a community-based healthcare initiative that quickly grew in scope and ambition to serve underprivileged and underserved communities in Meherpur and the adjacent districts.

Through an integrated approach of combining hospital-based care with outreach activities, the 20-bed, fully functional Impact 'Jibon Mela' Health Centre is providing healthcare services, including maternal and child healthcare; outpatient and inpatient treatment; specialized surgeries, such as eye, ENT, orthopaedic, and cleft lip/palate; and physiotherapy for prevention and cure of avoidable disabilities. Further,

the 'Jibon Mela' Health Centre also provides capacity-building training and health education for social awareness and community empowerment, bringing health, hope, and lasting impact to communities in need.



Impact Nursing Institute, Meherpur- Since March 2014



INI Students

Impact Nursing Institute was founded in March 2014 with a vision to empower rural, meritorious young girls through quality education in Nursing and Midwifery, offering a three-year Diploma degree in Nursing and Midwifery, accredited by the Bangladesh Nursing and Midwifery Council (BNMC). This educational project opens doors to economic independence for these rural young girls. In addition to academic training, INI emphasizes cultural and extracurricular activities.

Starting with just 20 students per year, the institute has now expanded to 50 students annually, responding to the country's growing demand for skilled and compassionate nurses.



Outer view of the 'Jibon Mela' Nursing Academic Building

A newly constructed seven-story educational complex, the 'Jibon Mela' Academy, houses modern classrooms,

spacious practical labs, a library, student accommodations, an administrative block, dining facilities, a kitchen, and a gymnasium with easy accessibility for the disabled to provide an inclusive environment to support the growing need for learning and holistic development.

IMPACT 'Jibon Jatra' Medical Van since February 2016

'Jibon Jatra', IFB's mobile air-conditioned hospital, is a transformative healthcare project for people living in the remote rural areas of Chuadanga, Meherpur and other surrounding districts. Launched in 2016, the hospital is equipped with eye, gynecological and orthopedic units where a medical team of doctors and nurses treat patients in remotest areas by taking healthcare facilities to their doorsteps. The eye unit comes with auto-refractometer, vision chart, trial lens set, torch, etc. The gynae unit offers ante-natal and postnatal care and the orthopedic unit includes portable physiotherapy machines.



The mobile-van organizes health camps to raise awareness about preventable diseases, promoting maternal and child health, and offer basic medical screening and treatment at distant localities.

Leprosy Project

IFB has been implementing a project for the patients with leprosy titled 'Activating and Engaging government and people in partnership (AEP)' since July, 2019 with partnership with The Leprosy Mission International Bangladesh (TLMI,B).

Under this project, the identified patients are registered for receiving free treatment at the Government health facilities. To ensure active engagement of Government health facilities for the care and treatment of leprosy patients, IFB maintains continuous communication with the relevant government health officials. IFB also collaborates with other regional NGOs to raise public awareness about leprosy, and has until now, identified 213 leprosy patients, all of whom are officially registered with the Government hospital and receiving free treatment.



Celebrating World Leprosy Day 2025

Additionally, IFB has supported the formation of Self-Help Groups (SHGs) for the engagement of the group members in income-generating activities to support themselves, and their families.

PROSHANTI Project

Pelvic Organ Prolapse, a condition often linked to childbirth and inadequate healthcare, can severely affect a woman's quality of life, causing physical discomfort and emotional distress. IFB's 'Proshanti' project has been supporting poor female patients with Pelvic Organ prolapse since January 2017 in partnership with DAK International Network/ PFE Australia. As part of this project, IFB has established 23 specialized facilities at 4 Government Medical College Hospitals and 18 private clinics with trained Gynecologists, who received hands-on training from a team of overseas Gynecologists from Australia on a new operative technique



The Proshanti Project

'sacrospinous fixation' in 18 districts of Bangladesh. The project has become a beacon of hope for many women who previously had little to no options for treatment.

BACHAO Project

BACHAO, the Bangladeshi American Charitable Organization, based in California, USA, has committed to continue to support IFB to provide cataract and ENT surgical treatments for 130 poor patients in 2026. BACHAO has been supporting IFB since 2014. BACHAO's long commitment towards IFB has supported a significant number of underserved people with eye and hearing disability treatments until now.

Hydrocephalus

Impact Foundation Bangladesh in collaboration with a local Neurosurgeon, implement a project for the under-privileged children suffering from hydrocephalus, an abnormal enlargement of the brain cavities (ventricles) caused by the build-up of cerebrospinal fluid (CSF). The project aims for reducing the sufferings of affected children that can be present at birth or triggered by tumors, infections, bleeding in the brain, or aging and can only be treated by surgery.

Such a treatment facility is rare to find outside of Dhaka city. Evidence shows children with this deadly condition are mainly from remote areas, and among poverty-stricken families. If left untreated, it can result in brain damage leading to severe physical disability or death.

With support from UK IMPACT Foundation, IFB operates 30 children with hydrocephalus each year to improve their quality of lives. IFB has treated a total of 241 children with hydrocephalus till date.



School SIDKO and Hygiene Program

“Providing access to safe water, sanitation and menstrual hygiene education for girls”- a project for the adolescent school-going girls, has been implemented by IFB in Chuadanga and Meherpur districts.

Under this project, IFB installs a safe drinking water system (SIDKO Plant) for arsenic-free drinking water, renovates the existing toilet facilities, and orient female adolescent students on menstrual hygiene practice. This project supports the rural adolescent girls with adequate knowledge to break the stigma surrounding a girl’s menstruation. Besides conducting special sessions on reproductive and menstrual health for adolescent girl students, IFB installs a proper pad disposal facility at the school washrooms for the girls. IFB also provides a menstrual hygiene kit containing two packets of sanitary pads, a hand soap bar, a water bottle, and a pocket booklet on menstrual hygiene.

Mothers' Club

IMPACT Foundation Bangladesh has been actively involved with the mothers of the poor rural communities at IFB's project sites in Chuadanga and Meherpur. IFB conducts courtyard sessions, every month, with the female members of the community where they discuss different topics on health, food and nutrition, environment, home gardening, communicable diseases, primary health care, diseases related with nutrition deficiency and how all of these have a relationship to disability. IMPACT Foundation Bangladesh emphasizes community ownership and sustainability through the mother's club meetings, which serve as a "resource centers" for poor rural women.



Each Mothers' club consists of 20-25 women. The main objective of the meetings is to empower the poor rural women of Chuadanga and Meherpur districts with knowledge so that they contribute to building healthy families.

IFB work with a total 1200 mothers club in Chuadanga and Meherpur districts comprising of 28,000 women members. Every member is actively volunteering with IFB to improve their livelihood and help their communities.

Home Garden

Homestead gardening, or home gardening is an innovative approach to combat micronutrient deficiency among the rural poor families. Until now, IFB established 32,678 home gardens in Chuadanga and Meherpur districts.

Under this project, IFB provides technical assistance and supports the rural mothers with seeds, fencing of the gardens, water source and foods for earth/bed preparation. The rural, poor families grow seasonal vegetables at their homestead, and are getting adequate dietary benefits. The mothers have reported having at least three vegetables all through the year that is believed to decrease rates of malnutrition among children.



The dietary diversity is an effective and sustainable solution for enhancing food security, providing nutritional support, and empowering local families who gain the advantages of

fresh, organic vegetables that contribute to their good health. IFB maintains integrated community participation approaches by means of nutrition training arranged by IFB's Trainers on the cooking procedures and the importance of a balanced diet.

IFB promote the five-bed homestead garden model in the communities, where the owners consume vegetables every day and also sell some vegetables that create some income generation for the rural women, and their families.

Capacity Building Training

Impact Foundation Bangladesh organizes capacity building training for the community leaders, TBAs, NGO/health workers, Primary School Teachers and the rural medical practitioners. The main objective of the training is to empower the health actors working in the community for early detection and the prevention of avoidable disabilities.

These actors meet regularly with the rural people, provide them information and help them for receiving the required services for their benefits from IFB's hospitals.



Rehabilitation Support for the flood victims in Bangladesh

This year, IFB handed over 10 newly-constructed houses to 10 distressed families who have lost their home in the deadly flood that struck the Feni district in 2024. The flood destroyed homes, crops and livestock affecting families of women-led households, physically disabled members, and families with elderly family members.



ANNUAL PERFORMANCE 2025

114,438
Patients
received
treatment

7,639
Surgeries
performed

923
EnT
Surgeries

269
Orthopedic
Surgeries

51
Cleft Lip
& palate
Surgeries

4,346
Cataract
Surgeries

30
Hydrocephalus
Surgeries

342
General
Surgeries

1,441
Uterine
Proplase
Surgeries

237
Gyne
Surgeries

3,804
Patients
received
Assistive
Device

7,291
Mothers &
Children
immunized

14,358
Physiotherapy
Services

649
TBA
Trained

250
Health
Workers
Trained

4,407
Students
eye sight
Tested

328
Community
Leaders
Trained

355
School
Teachers
trained
on vision
Test

98
Health
practitioners
trained

4,846
Mothers
receive
pre&post
natal Care

10
flood-
affected
families
received
constructed
houses

Arafat is enjoying his life

A relieved father, Azizur shared his happiness with IFB after his son's tenotomy surgery and the receipt of an orthotic device. He said, "When my son, Arafat, was 12 days old, I took him to a Child Specialist in Chuadanga, who informed me about the Impact Hospital and Diagnostic Centre, where clubfoot children are treated with care. Upon physical examination at the hospital, our newborn underwent a series of plaster casting to gradually align the feet, followed by a tenotomy surgery. He was also prescribed orthotic shoes. With regular physical exercises and the continued use of shoes Arafat's condition has improved. Today, he plays with other kids. I am thankful for the service I have received."



Rajab Ali expressed his gratitude

Sixty-year-old Rajab Ali, suffered from a low vision for a long time. After cataract surgery at the Impact Hospital and Diagnostic Centre, he explained, "I can see clearly and live independently. I cannot express my happiness- It felt like I regained a part of my life that I once lost. Thanks to the doctors and staff at the Impact Hospital and Diagnostic Centre, who helped me to regain my vision."



Aklima Begum grows organic food in her home garden

32-year-old, Aklima Begum, a regular participant of IFB's Mothers' Club (MC) since 2022 has been growing organic vegetables at her courtyard. A satisfied and happy Aklima mentioned, "I can provide for my family fresh, chemical-free, vitamin-rich leafy, green vegetables to ensure better nutrition and help prevent Vitamin A deficiency of my children. I have heard that fresh and chemical-free vegetables retain the vitamin content better." To state the benefits of the home garden, she exclaimed, "I can grow vegetables year-round." In a content voice, she shared, "I am truly happy and proud to have a vegetable garden in my yard. It has improved the nutrition and health of my family. My sincere gratitude to Impact Foundation Bangladesh for guiding me towards this life-changing practice."



Our Valuable Donors

International

UK Impact Foundation

DAK International Network, Australia

Lutz and Hedda Franz Charitable Trust (LHFCT)

A Leg To Stand On, USA

Bangladeshi American Charitable Organization
(BACHAO), USA

The Leprosy Mission International Bangladesh

National

Social Services and Management Trust
(SSMT)

C&A Sourcing International

Mr. Mohammed Bin Quasem and his Family

Continental Insurance Company Ltd

Mr.Md.Mahbub Alam and Family

Dr. S.M. Akbar

Mst. Rezia Khatun

IMPACT FOUNDATION BANGLADESH -IFB

STATEMENT OF FUND IN-FLOW AND OUT-FLOW FOR THE YEAR 2024-2025

FUND IN-FLOW	2025 In Taka
UK Impact Foundation	76,583,527
Impact Norway	196,171
Lutz & Hedda Franz Charitable Trust (LHFCT)	55,062,166
Partners For Equity Limited (DAK Foundation Australia)	47,342,912
A Leg To Stand On, USA	1,190,000
Bangladeshi American Charitable Organization (BACHAO), USA	1,924,000
The Leprosy Mission International -Bangladesh	1,123,210
Social Services & Management Trust (SSMT)	9,400,000
Mst. Rezia Khatun	180,000
Mr. Mohammad Bin Quasem	600,000
Zakat Fund	190,650
Continental Insurance Company Ltd	1,48,486
C & A Sourcing International	2,18,840
Mr. Md. Mahbub Alam	1,000,000
Other individual & Corporate	1,019,830
Cost Recovery from Activities	84,069,692
TOTAL INFLOW	280,249,484
FUND OUTFLOW	
Surgical support for the rural and riverine poor people with disabilities related to eye and ENT Diseases at the Jibon Tari Floating Hospital	1,938,100
Proshanti Project Phase-II	47,330,898
IMPACT Nursing Institute-INI	8,840,882
Emergency Assistance For Flood Affected Families in Bangladesh.-Feni	6,573,371
Strengthening & Expansion of IFB's Interventions for Prevention and cure of avoidable disabilities in rural Bangladesh	70,915,507
Emergency Assistance For Flood Affected Families in Bangladesh.-Noakhali	3,705,925
Housing Support to the Flood Affected Families in Parshuram Upazila under Feni District	4,247,290
Prevention and cure of avoidable disability through Impact Meherpur Programme	28,075,154
Capital Expenditures	87,288,165
Program Support Unit	21,278,997
TOTAL OUTFLOW	280,194,289
RESERVE/DEFICIT	55,195

This year at a glance

Photo Gallery



Rezaul Haque, PhD, Chairman and Founder Trustee with the Trustees and Senior Management members at IFB's 70th Board meeting



Flower Bouquet presented to Rezaul Haque, PhD, on being the 4th Chairman of IFB in February 2025



Jibon Tari Floating Hospital celebrated its 26th anniversary in April



Glaucoma week celebration



World Nurses Day 2025 celebration



IMPACT Bangladesh delegation at the 10th IFIO conference



A crest presented to Lady Jean Wilson from IMPACT Bangladesh at the 10th IFIO conference to honor her contributions towards the disabled population in Bangladesh



IFB wished Lady Jean Wilson on her Birthday



Mr. Mostak Rahman from Impact Norway visited Impact Meherpur Programme and observed field activities



Mr. Lutz Franz, Chairman, Lutz and Hedda Franz Charitable Trust (LHFCT), and Mrs. Hedwig Franz, Trustee, at the inauguration of the Jibon Mela Academy, the new building of Impact Nursing Institute



Mrs. Lucinda Meagher, Trustee, IMPACT Foundation UK, and her husband, Mr. Russell Meagher, at a dinner event with IFB's Board of Trustees in Dhaka

IMPACT Foundation Bangladesh

Cosmopolitan Centre (3rd floor)

22/2 Babor Road, Block B

Mohammadpur, Dhaka 1207

Phone: +880 2 41022649-51

Email: Impact@dhaka.net

Website: www.impactfoundationbd.org